

Figure 3 The efficiency of the 9 m throws depending on ranking position

For all throws, those from 7m represents approximately 9% (751/8347) and the efficiency is increased because the direct defender is missing when throwing. Very good efficiencies achieved top 12 teams (74-75%), while those of the second half of the ranking has averaged efficiency of 67% (Table 1, Figure 4).

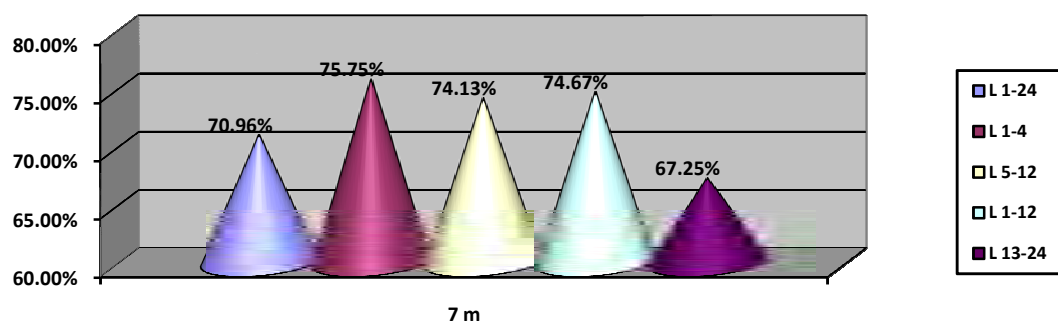


Figure 4 The efficiency of the 7 m throws depending on ranking position

For this indicator - fastbreak, the efficiency is in line with the 7 m throws, the first 12 teams this being 76-77% and for 13-24 places drops to 69% (Table 1, Figure 5).

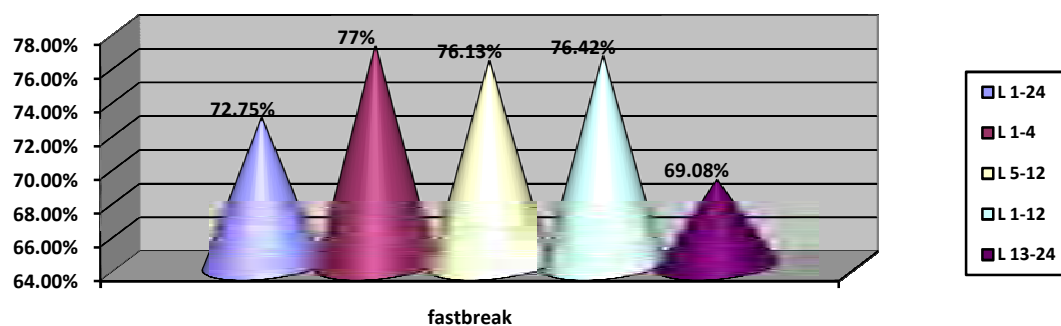


Figure 5 The efficiency of the fastbreak throws depending on ranking position

A surprising situation is where total efficiency throws, which for the first 12 class is identical - 58.25%, but falls by more than 10% for the last 12 ranked - 47.5% (Table 1, Figure 6).